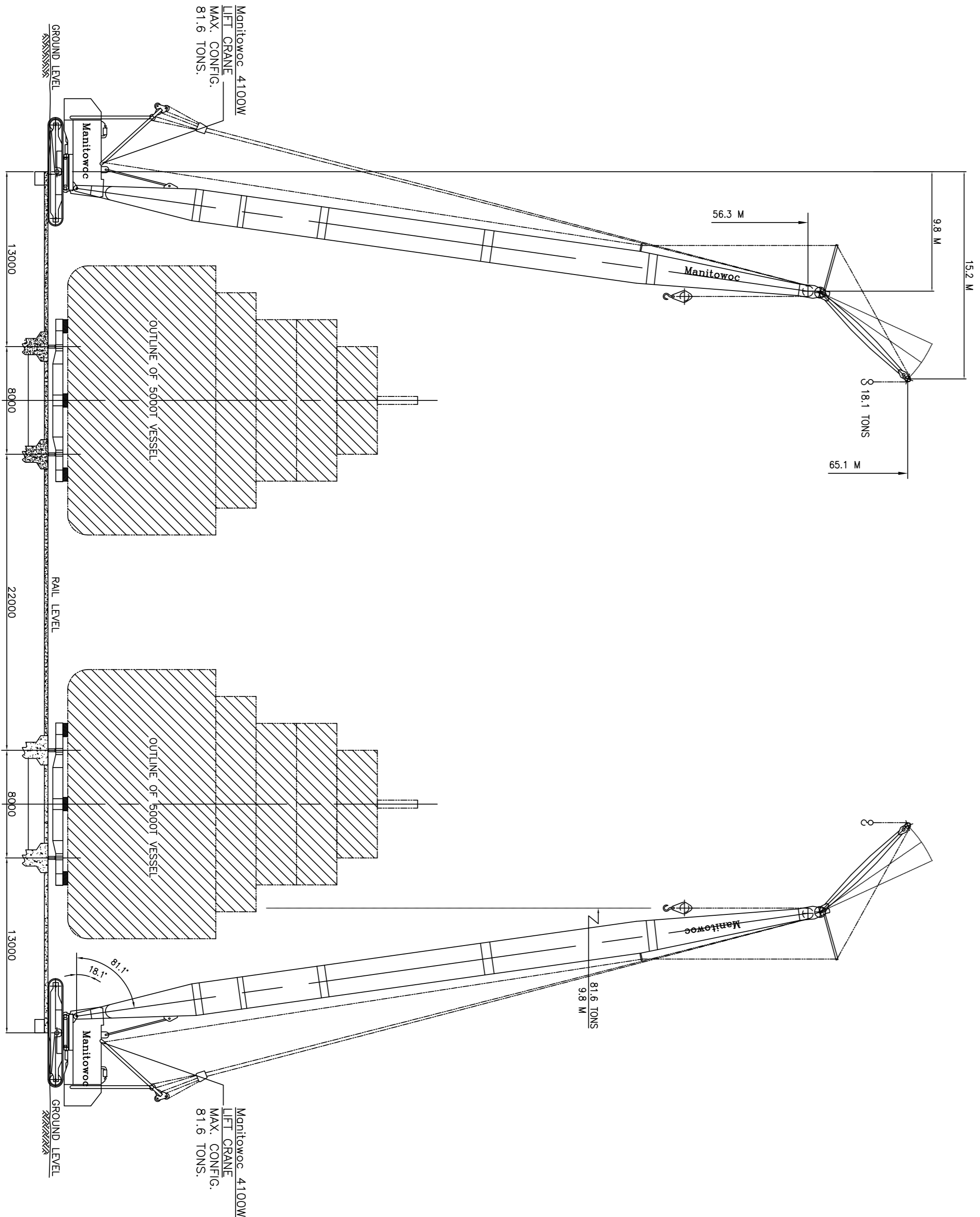


SLIPWAY GENERAL LAYOUT PLAN
SCALE 1:500



SECTIONAL VIEW
SCALE 1:250

PRINCIPAL PARTICULARS	
TOTAL LENGTH (EACH)	512 M
DRY BERTH LENGTH (EACH)	255 M
RAIL SPAN	8 M
LOAD CAPACITY	5000 T

SLIPWAY
PRINCIPAL DIMENSIONS

ASRY ARAB SHIPBUILDING AND REPAIR YARD	DRAWN BY : MPB	SCALE: AS-SHOWN	DATE: 26-05-2008
	CHECKED BY : AP	DWG. NO.:	
	APPROVED BY : AEB		1191